

YOUR CRITICAL LIFT EXPERTS

ACECO



**American
CRANE**
& EQUIPMENT CORPORATION

POWER GENERATION Turbine Powerhouse Cranes

American Crane has extensive experience manufacturing turbine maintenance and powerhouse cranes specifically designed for dependability during plant shutdowns. These robust cranes are built with the durability needed to install, maintain, or remove the most valuable and expensive piece of equipment in a generating station. Unanticipated maintenance costs can be avoided during out-ages by selecting reliable cranes and equipment to service the turbine in natural gas, biomass, geothermal, hydro and waste-to-energy power plants.

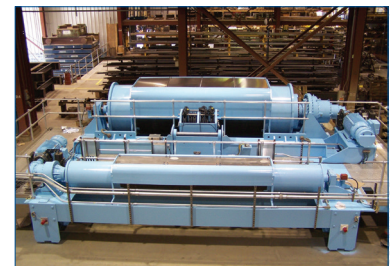
Crane Features and Options Include:

- State-of-the-art motor controls, radio controls, safety interlocks, and alarm systems
- Two hoist holding brakes, decreasing the risk of falling loads
- Hoist overload limits to prevent lifting beyond capacity
- Variable speed control for accurate positioning
- Both pendant and radio operator controls
- Redundant upper limit switches to prevent “two-blocking”
- Helical gearing for smooth and quiet operation
- Walkways to ensure safe and easy maintenance



American Crane Offers:

- Custom solutions to meet each specific application
- One single source for both design and fabrication
- Welding to AWS D1.1 and AWS D1.14 standards
- Full assembly and shop testing of all equipment
- Customized quality program to meet exact criteria
- Site Installation and testing capabilities



ACECO

531 Old Swede Road • Douglassville, PA 19518 • 877.877.6778 • 610.385.6061

AmericanCrane.com

