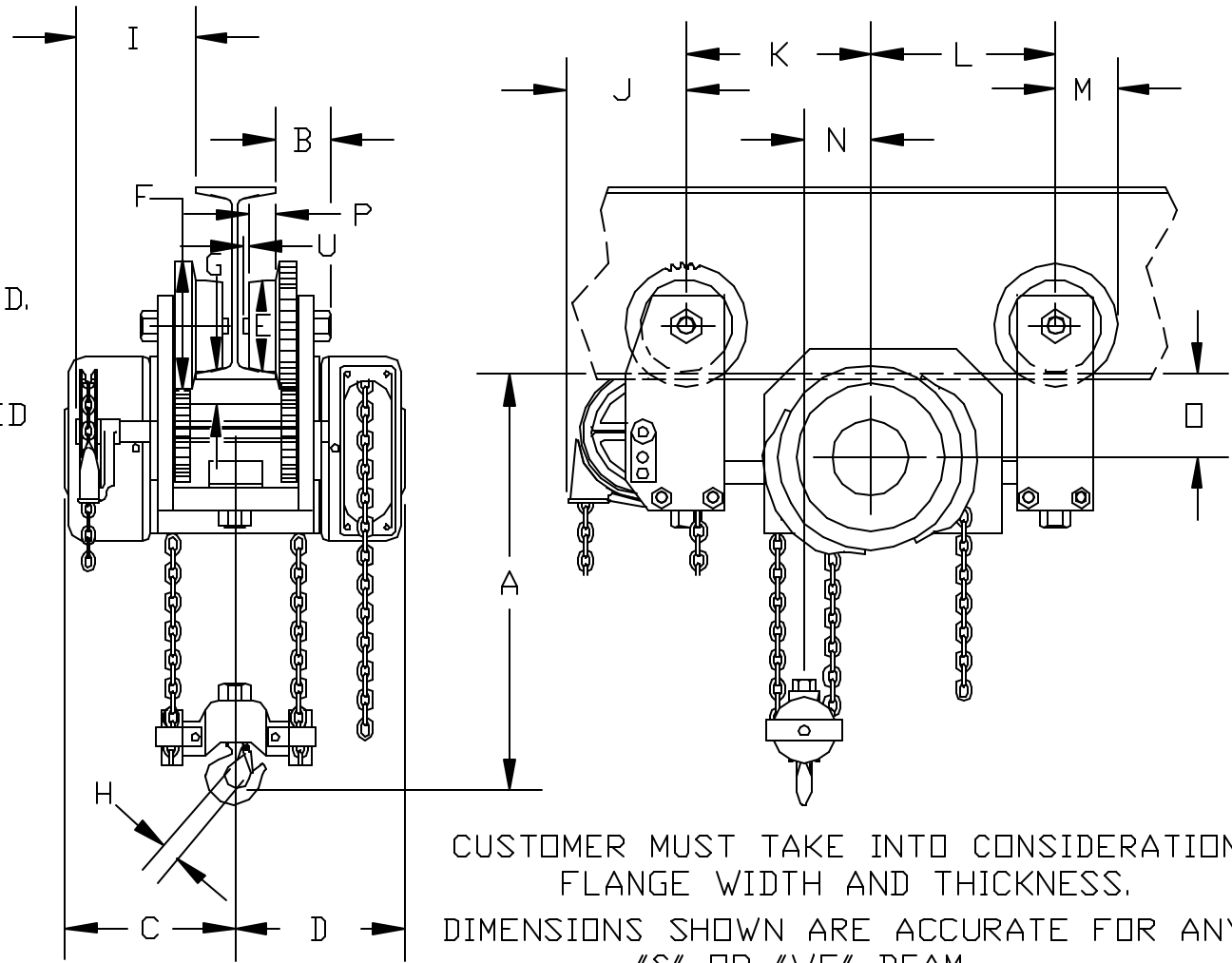


- A 8 1/4" P1 11/32"
- B 2 9/16"
- C 9 7/8"
- D 9 7/8"
- E 6 3/8" WH'L. TREAD O.D.
- F 8" WH'L. FLG. O.D.
- G 15/16" PLAIN OR GEARED
- H 1 1/32"
- * I 8 1/8"
- * J 6 1/8"
- K 11 9/16"
- L 7 11/16"
- M 4"
- N 3"
- O 3 7/16" U 3/16"
- * GEARED UNITS ONLY
UNIT NOT ADJUSTABLE



CUSTOMER MUST TAKE INTO CONSIDERATION
 FLANGE WIDTH AND THICKNESS.
 DIMENSIONS SHOWN ARE ACCURATE FOR ANY
 "S" OR "WF" BEAM

FLAT TREAD WHEELS (NOT SHOWN) SUPPLIED FOR "WF" BEAM APPLICATIONS

	3 TON SWIVEL TRUCK LOW HEADROOM	DR. RLB	TR.	CK.	AP.
R2 AXLE DIM RLB 11/18/02	CHESTER HOIST LISBON, OHIO	SCALE NONE		DATE 6-19-00	
R1 TON CHG. RLB 10/15/02		REF. DWG. NO.		CL3ST	
MK. REVISIONS	CK-DATE	Dwg. No. CD050			